

Central Oregon Flyfisher

Vol. 37, Number 1

January 2014

NEW YEAR

Greetings



CONTENTS

General meeting

- 2 Wildfires, fisheries, and streams

Outings

- 2 Call for 2014 outings destinations and leaders
- 2 New Year's Day outing - Crooked River
- 2 Outings 2014

Education

- 3 Happy to be in Oregon
- 3 Winter fly-tying series

Wild Women of the Water

- 3 Learn new skills

Membership

- 3 Welcome new members

Next Cast Flyfishers

- 4 Fly tying at Tumalo Community School & in LaPine

Library

- 4 Rivers of a Lost Coast

Conservation

- 5 Conservation activities in 2014

Tyer's Corner

- 5 TLF Dry/Soft-hackle

Upstream Events

- 6 Calendar of events

Annual Banquet and Fundraiser

See insert at end of newsletter

PRESIDENT'S MESSAGE

I want to extend a big "thank you" to the many people who volunteered their valuable time to COF in 2013: the 2013 Board of Directors; members who led an outing; members who organized a COF activity/event; and everyone who participated in Kokanee Karnival and the angler education program. Your efforts make this club a success. A few key positions still need a volunteer for 2014. If you would like to help, let me know.

The 2014 Board of Directors wishes you a happy and prosperous New Year. I sincerely appreciate everyone's effort and look forward to working with you in the coming year.

- Dave Dunahay (president@coflyfishers.org)



Volunteer Jim Carpenter taught fly tying to students at Tumalo Community School for the Next Cast Flyfishers program. PHOTO: Karen Kreft



GENERAL MEETING

Jan 15 | 6:00 P.M. | Bend Senior Center, 1600 S.E. Reed Market Road, Bend

Wildfires, fisheries, and streams

Wildfires are not uncommon to Central Oregon. Fire suppression policies have contributed to more drastic results when wildfires burn out of control. Controversy surrounds current policies regarding fuel reduction, forest thinning, and salvage logging after fires. Fires clearly have the potential to impact our streams and fisheries.

George Wuerthner is an ecologist with interests in conservation history and biology. He has worked as a wilderness ranger, biologist, and range conservationist for the federal government. More recently, he has been a university instructor, photography instructor, consulting biologist, and wildlife policy analyst. He edited the book *Wildfire*, a compendium of spectacular photography that includes more than 40 contributions from authors.

Wuerthner's program will provide general perspectives on wildfires and help us to understand the important role that wildfires play in stream and fisheries health.

OUTINGS

Call for 2014 outings destinations and leaders

Your outings coordinator would like to hear from you! Which outings are most desired in 2014? What destinations would you like to go to? I am also seeking members who are willing to offer, organize, and lead COF outings during the coming year. Experienced trip leaders are encouraged to again volunteer their valuable and much appreciated services to the club membership. Club members who have never organized and led a fishing outing, but have the knowledge and skills to introduce others to a new fishing destination, are strongly encouraged to become a trip leader. If you are interested in sharing your ideas or acting as a 2014 outing leader, feel free to contact me at the monthly meeting, by phone [541-549-2072] or email [outings@coflyfishers.org].

- Eric Steele, Outings Coordinator

New Year's Day outing - Crooked River

Jan 1 | Meet at Jake's Diner at 9:00 A.M. | Leader: Terri Grimm

Meet at Jake's Diner on the east side at 9 A.M., have breakfast with fellow COF members, and decide if the trip to the river is for you. If there's no snow, temperatures are above freezing, and the roads are clear, this trip is on. **Be sure to get your 2014 license before-**

The Central Oregon Flyfisher

OUTINGS 2014

Month	Day	Destination	Leader
Jan	1	Crooked River	Terri Grimm
Mar	TBA	Owhyee River	Lee Ann Ross
Jun	6, 7, 8	Prineville Reservoir	Betsy Brauer Mullong
Jun	19-25	Upper Rogue River	Eric Steele
Jul	TBA	East Lake	Quentin Stanko
Sep/Oct	TBA	Lower Deschutes River	Robert Gentry

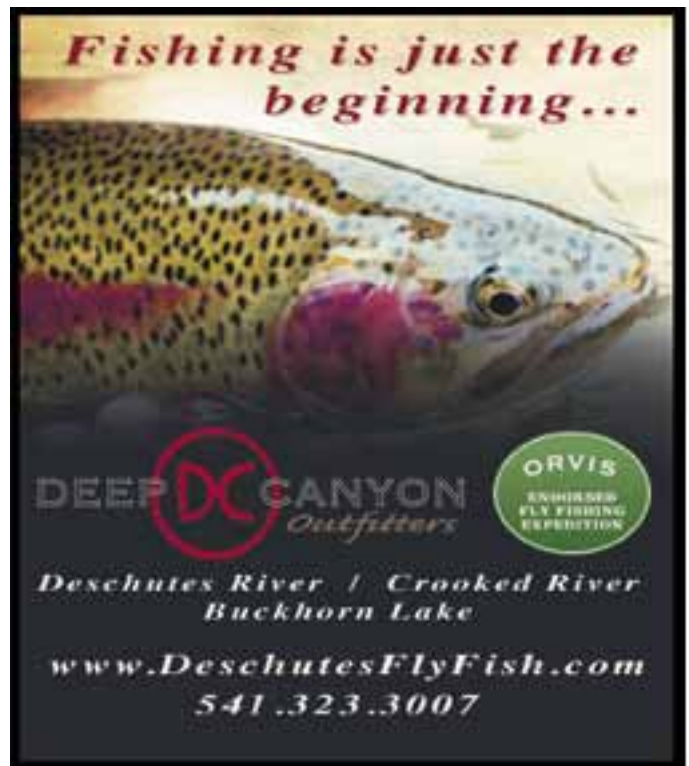
hand. After breakfast, meet at Big Bend Campground between 11:00 and 11:30 A.M. Fish for a couple of hours, gather around the campfire for hot chocolate and cookies, and get home before dark. For more information about the outing, flies, and gear, contact Terri Grimm [tgrimm@sonatainc.com]. On the morning of New Year's Day, you can reach Terri at 541-350-0194 [cell].

EDUCATION

Happy to be in Oregon

My wife, Pattie, and I are new to Oregon. We arrived about this time last year from the Fort Worth area of Texas. There are not any trout streams near Fort Worth, so I traveled to New Mexico a couple of times each year to fish. The trip took a day and a half one way. Due to some changes in our family situation, we decided to move to Bend, and it was a great decision. I joined COF and jumped into the winter fly-tying sessions. The Crooked River outing was really great. This past sum-

continued



mer, I became acquainted with Fall River, East Lake, North Twin, Hosmer Lake and Metolius River.

I have always made things with my hands: guitars, banjos, mandolins, gunstocks, fly rods, fishing nets, and furniture. While living in Arizona, I was on the Arizona Fly Casters board of directors. I led rod-building activities, introduced net building to club members, and helped with other classes and outings.

As education chair, I will focus on introductory fly-fishing education. During the January 2014 pre-meeting education session, I will show the net-building process I have developed. There will be completed nets and examples of nets in progress. Advanced woodworking skills are not required to build your own landing net.

I will offer net-building classes later in the year. Members only please. Cost will be based upon materials. Details to be announced.

- Steve Stevens [education@coflyfishers.org]

Winter fly-tying series

It's finally here—the COF Winter Fly Tying Series! Classes will be held every Tuesday, 6:00 P.M., at the Bend Senior Center, beginning January 7.

I will lead the first class and present a classic Sparkle Dun, a fly I use a lot. This style of fly can represent any mayfly by changing sizes and color. I tied this fly last year, but have had several requests to show the fly again. As I write this, I'm still trying to determine the second fly—stay tuned.

This is a great opportunity to re-stock your fly box with effective, fishy flies. Each session will be led by a guest tyer who will provide instruction for two flies, and time will be available to tie several of each pattern. I try to provide a pattern sheet in advance so you can decide whether you'd like to attend.

Please let me know if you plan to attend to ensure enough materials are available. Cost is \$5 per session to offset the room and materials. Just bring your vise, tools and thread. The club will provide the rest. Hope to see you!

- John Kreft
[503-559-3811 or
jckreft@gmail.com]

WILD WOMEN OF THE WATER

Learn new skills

Winter is a wonderful time for Wild Women to take a few classes to reinforce skills or acquire new ones. Local fly shops offer classes for casting, entomology, and fly tying. Check their websites for details. Attend the COF Tuesday night fly-tying series to learn about patterns that can be used all season.

- Kari Schoessler [wildwomen@coflyfishers.org]

MEMBERSHIP

Gary is helping me get up to speed on all of my responsibilities as membership chair. Gary is also developing a secure online database so members can access the current roster, renew their membership, and pay via PayPal. You'll still be able to renew through the mail and pay by cash or check, if you prefer. Membership renewals not post-marked by December 31 will cost \$36. Wishing you all a year of fantastic fishing in 2014!

- Tim Schindele [membership@coflyfishers.org]

Welcome New Members

Joe and Jan Burda

Richard & Shirley Olsen

Steve & Patti Shelton



FLY FISH
CENTRAL OREGON
WITH THE EXPERTS FROM
THE FLY FISHER'S PLACE.

FULL-SERVICE SHOP, GUIDED TRIPS,
INDIVIDUAL AND GROUP LESSONS.
PRIVATE LAKE ACCESS AND THE
BEST FLY SELECTION IN THE NORTHWEST!

The Fly Fisher's Place
FIRST CLASS IN SERVICE,
SELECTION & KNOWLEDGE

541-549-FISH | 151 W. MAIN AVE., SISTERS | OPEN 7 DAYS A WEEK
GREENDRAKEHATCH@GMAIL.COM | WWW.FLYFISHERSPLACE.COM

NEXT CAST FLYFISHERS

Fly tying at Tumalo Community School and in LaPine

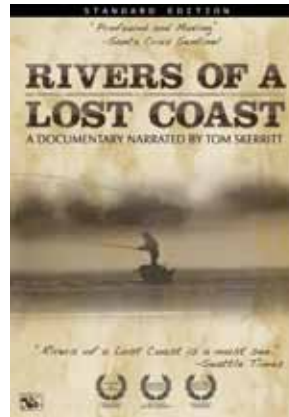
Happy New Year! The Next Cast Flyfishers are in full swing. In January, students will complete our fly-tying elective course at Tumalo Community School. We started the course with hopes of completing several different fly patterns and styles. With about only an hour of instruction each week, students will tie fewer patterns. Students have learned about the tools and equipment used in fly tying and a variety of materials and techniques. They seem to like flies that require only two or three materials and steps! They will finish the course this month with their fly boxes filled with chironomids and Griffiths Gnats.

In January, a new group of young fly fishers in La Pine will begin meeting to learn the basics of fly fishing, fly tying, and entomology. The group will meet at La Pine High School under the leadership of Brad Emery. The first sessions will be held indoors with several outings planned as weather allows. The course will cover knots, casting, equipment, and a general introduction to fly fishing. We will announce the schedule and ask for volunteers as needed. There will be a variety of activities for you to choose from; we encourage anyone and everyone to volunteer to assist the students! We will post class details on the COF Calendar.

Please let me know if you have any questions or need additional information. Karen Kreft [503-409-0148 or nextcast@coflyfishers.org].

- Karen Kreft

LIBRARY



Rivers of a Lost Coast

This award-winning documentary is narrated by actor Tom Skerritt.

"In 1974 an article titled *The World's Best* appeared in the pages of *Sports Illustrated* and forced the off-kilter fly angler Bill Schaadt into the national spotlight. Schaadt, already a Russian River legend, was at the center of a competitive,

often-ungentlemanly angling culture. In the 1940s and 50s, California's coastal fly fishing was a collection of innovative cutthroat anglers who just happened to be some of the best fishermen on the planet. But shortly after news of this amazing culture hit the press, the once vibrant rivers that gave birth to the devoted culture were undergoing serious, even irreversible damage. By the early 80s, these mystical waters had become the "Rivers of a Lost Coast".

Using never before seen footage, vintage photos, archival headlines and exclusive interviews, *Rivers of a Lost Coast* shows a side of California most people never knew existed. With narration by the great conservationist Tom Skerritt and interviews with legendary anglers Lani Waller, Russell Chatham, Frank Bertaina, Hal Janssen and a host of other under-the-radar steelheaders, *Rivers of a Lost Coast* reminds us of the ever increasing importance of wild fish in wild rivers."

If you are not a cold weather fly fisherman/fisherman this DVD is a great way to be an "armchair" outdoors person during the winter months. This DVD and other materials will be available at the library table during the January COF general meeting. Stop by, look

continued on next page

Fly & Field
OUTFITTERS

NEW Website - www.flyandfield.com

- Up to date fishing reports
- Real-time river & weather conditions

Guided Fly-Fishing Adventures

- Deschutes, Crooked and Fall rivers
- Cascade Lakes
- Trout and steelhead

Full-Service Fly Shop

35 SW Century Dr., Bend OR 97702 ■ 541-318-1616 ■ www.flyandfield.com

things over, and check out any items that strike your fancy.

John Tackmier, Librarian [541-549-6252]

■ CONSERVATION

Conservation activities in 2014

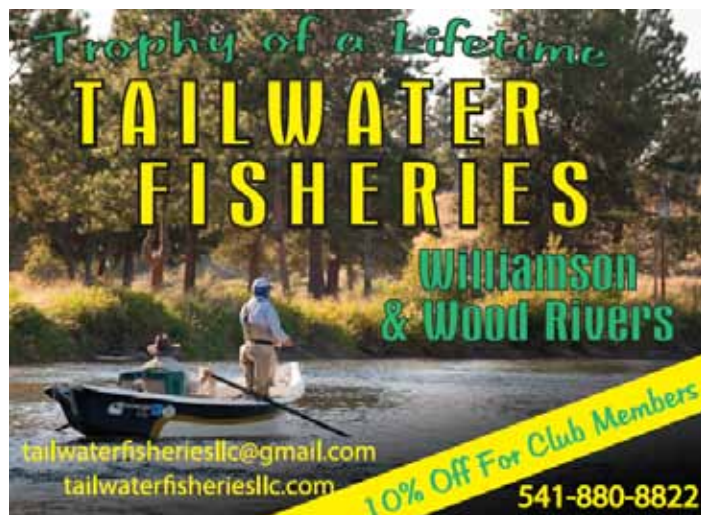
When someone joins COF or renews their membership, they often cite “conservation” as a reason for becoming a member. As the new COF conservation chair, I interpret this to mean participation in conservation activities. COF has had conservation activities in the past. I hope to increase the number of activities over the next two years.

I have approached ODFW, Deschutes Land Trust, and Upper Deschutes Watershed Council to learn about projects that could use our help. What would you like to do? Do you know about projects we could work on? Do you know of a section of river or lake that needs to be cleaned up or otherwise could use our help? Is your favorite spot being loved to death? Let me know if you have some ideas or preferences.

A study was recently conducted to understand the common beliefs held by Oregonians on a variety of topics: education, healthcare, environment, business development, etc. A number of organizations and government agencies are looking at the results, available at: <http://oregonvaluesproject.org/>.

Oregonians ranked environment very high in their values. Two of the top five, and three of the top ten values are environmental in nature. The majority of Oregonians would sacrifice economic development if it came at the expense of the environment. That's great news for a fishing club. Hopefully our elected leaders will take this to heart.

- Yancy Lind [conservation@coflyfishers.org]



The Central Oregon Flyfisher

LIND | WHITE GROUP

Yancy Lind & Eric White

Financial Planning & Investment Management



Merrill Lynch
Wealth Management®

PROUD SUPPORTERS OF COF

541-312-6821 | yancy_lind@ml.com

■ TYER'S CORNER

Now is the time to fill our fly boxes and plan for the coming season. Talk to friends and guides to discover new water and find new flies that work and are easy to tie. And remember fly-tying sessions every Tuesday evening. I developed this month's pattern while fishing soft hackles dry. Keeping the fly afloat was a problem, especially when fishing heavier water. Winding a size 20 or smaller dry fly hackle through the thorax two times fixes the problem. And there's a bonus: the dry fly hackle keeps the soft hackle feather from flattening along the body, and the fly stays dry longer. Good luck and good hunting.

- Jerry Criss [541-536-3581 or tlfly44@msn.com]

TLF Dry/Soft-hackle



Hook: #8 to #20 dry fly hook (102Y shown in photo)

Thread: color to match hatch, 8/0 to 14/0

Body: dry fly dubbing to match hatch

Ribbing: any light-colored thread

Dry Hackle: grizzly, two

turns

Thorax: Ice dub, tan

Soft Hackle: partridge or shades of dun

Head: tying thread.

1. Lock in the thread at the hook point, wrap to above the barb, and tie in the ribbing material.
2. Dub the body forward about $\frac{3}{5}$ of the way.
3. Bring the rib forward, winding it opposite the body so it shows better and tie it off.
4. Tie in the dry hackle and let it hang. Wrap in the thorax three to four wraps, and wrap the dry fly hackle through the thorax.
5. Add two or three wraps of the soft-hackle and form a neat head.

Central Oregon Flyfishers Upstream Events 2014

Date	Time	Activity	Location	Contact
JANUARY				
Jan 1	9:00 am	OUTING - Meet at Jake's Diner	Crooked River	Terri Grimm [541-350-0194]
Jan 2	6:30 pm	monthly board meeting	Environmental Center	Dave Dunahay [president@coflyfishers.org]
Jan 7	6:00 pm	fly-tying series	Bend Senior Center	John Kreft [jckreft@gmail.com]
Jan 15	6:30 pm	general meeting	Bend Senior Center	Dave Dunahay [president@coflyfishers.org]
<hr/>				
IN THE FUTURE				
Mar 6-9	Central Oregon Sportsmen's Show, Deschutes County Fair & Expo Center			
Mar 7-9	Northwest Fly Tying and Fly Fishing Expo, Linn County Expo Center, Albany, OR			



2014 COF Board Members: Dave Dunahay PRESIDENT Vacant VICE PRESIDENT Joe Wierzba TREASURER Cliff Price SECRETARY Mike Tripp Programs
Debbie Norton Banquet John Tackmier Library Eric Steele Outings Karen Kreft Next Cast Flyfishers Kari Schoessler Wild Women of the Water
Lee Ann Ross Director at Large Tim Schindele Membership Vacant Raffle Steve Stevens Education Frank Turek Kokanee Karnival Yancy Lind Conservation

Membership application available from: <http://www.coflyfishers.org>
For advertising information, call Mike Shadrach at 541-678-5717.



Central Oregon Flyfishers

PO Box 1126 Bend, Oregon 97709





2014



Annual Banquet and Fundraiser

Saturday • March 15, 2014 • 5:30 P.M.
Riverhouse Convention Center

BEFORE February 17 - \$37 per person & automatic entry in the early bird fly-rod drawing
February 17 to March 9 - \$42 per person (no dinner sales after March 9)
Questions? Contact Debbie Norton [503-510-2767].

Attend COF's primary fundraising event to support the Kokanee Karnival Youth Education Program, Next Cast Flyfishers program for older youth, conservation program, habitat restoration efforts, club activities, and membership services. Join the fun and dine on fine, delicious food. Have an exciting time with the raffle, pick up some high-quality flies or unique family items in the silent auction, and bid on great opportunities at the live auction. Take advantage of the early bird registration; save \$5 and be automatically entered in the fly-rod drawing. You may purchase raffle tickets in advance using the registration form (six tickets for \$5). Registration form and directions to River House Convention Center on reverse.

MENU

A no-host bar will be available. You may bring your own wine.

Garden Salad

Mixed greens, vegetables & sliced rolls with butter

Entrée

Fresh vegetable medley & starch with your choice of:

Garlic & herb marinated chicken
with sun dried tomato basil cream sauce

OR

Grilled top sirloin served with a wild mushroom demi

OR

Vegetarian seasonal butternut squash ravioli
served with vegetables & a roasted red pepper cream sauce

Dessert

Chef's dessert

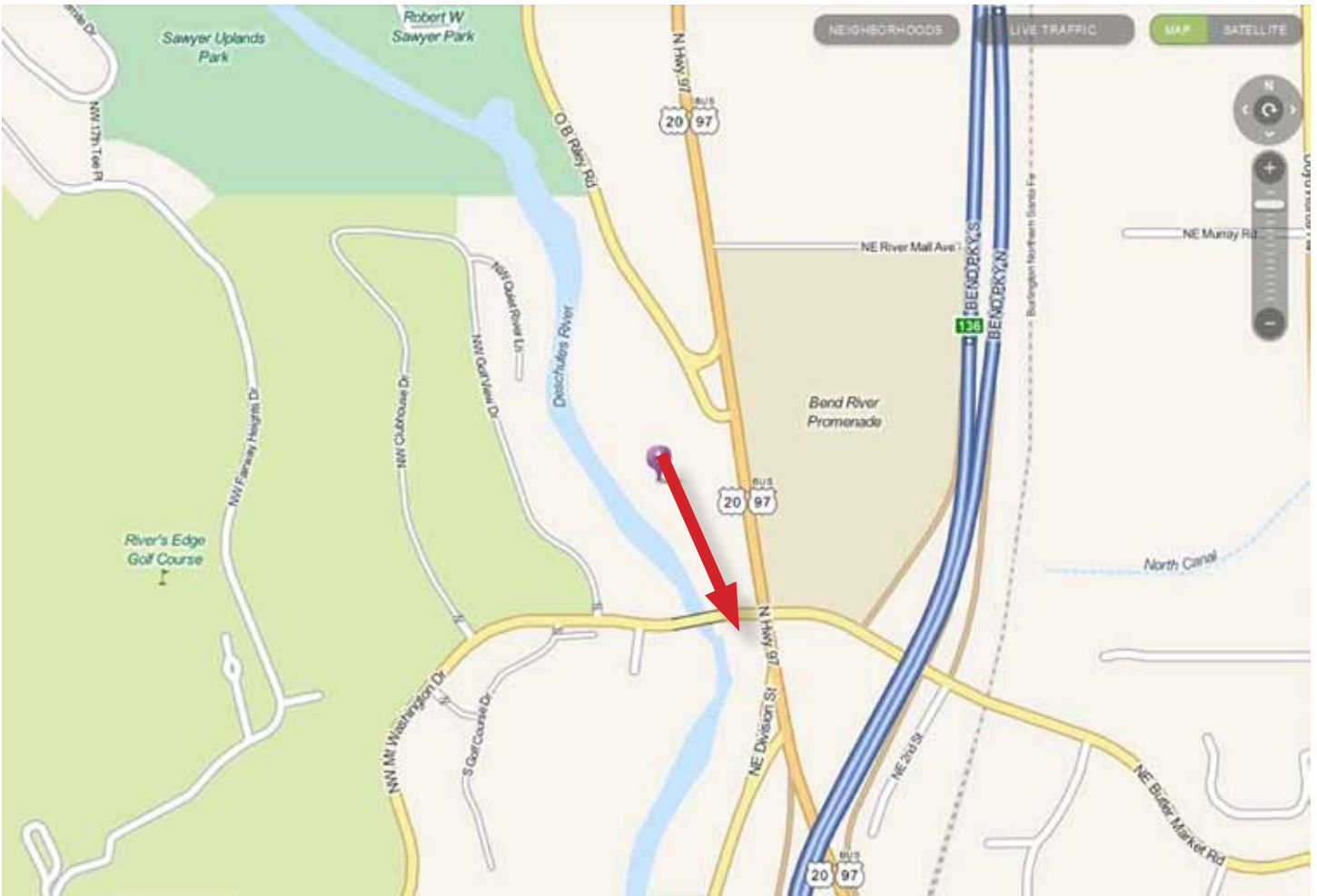


The
Riverhouse
HOTEL & CONVENTION CENTER

The Riverhouse

HOTEL & CONVENTION CENTER

3075 N. Hwy. 97, Bend, OR 97701 • 541-389-8810



Mail completed form (indicate dinner choice and raffle ticket amounts) and your check (\$37/person **BEFORE** Feb 17 • \$42/person Feb 17 to Mar 9) to COF BANQUET, P.O. Box 1126, Bend, OR 97709.

PRINT CLEARLY

Name _____ Steak ____ Chicken ____ Veg. Ravioli ____

Spouse/Guest(s) _____ Steak ____ Chicken ____ Veg. Ravioli ____

Guest(s) _____ Steak ____ Chicken ____ Veg. Ravioli ____

Raffle Ticket Total Enclosed [\$5 increments • \$5 = six tickets] = \$ _____

Email _____

Telephone _____

Amount enclosed (circle one): \$37 or \$42/person **BEFORE February 17** - \$37 per person & Automatic entry in the early bird fly-rod drawing **February 17 to March 9** - \$42 per person (no dinner sales after March 9)